

# RSO UNSPIDER LAPAN-INDONESIA ACTIVITIES

**Presented by: Sayidah Sulma**

**REGIONAL SUPPORT OFFICER UN-SPIDER  
INDONESIAN NATIONAL INSTITUTE OF AERONAUTICS AND SPACE  
(LAPAN)**

Presented on

United Nations International Conference on Space-based Technologies for Disaster Management

- "A consolidating role in the implementation of the Sendai Framework for Disaster Risk Reduction: 2015-2030", 14-16 September 2015, Beijing, China.

- **LAPAN** as Indonesian Space Agency was established on November 27, 1963 by Presidential Decree No.236 of 1963
- LAPAN role reinforced by the presence of the Law No.21 of 2013 (Indonesian Space Law).
- LAPAN has authorities on:
  - 1) Space science,
  - 2) Remote sensing,
  - 3) Space technology mastery,
  - 4) Platform Launching, and
  - 5) Space commercial activities
- Dealing with Disaster, LAPAN committed to provide the space-based information especially in the context of preparedness and emergency response. LAPAN coordinates with the Indonesian National Board for Disaster Management (BNPB) and another stakeholder agencies.
- **LAPAN HAS BEEN ESTABLISHED AS REGIONAL SUPPORT OFFICE OF UNSPIDER SINCE FEBRUARY 19, 2013.**

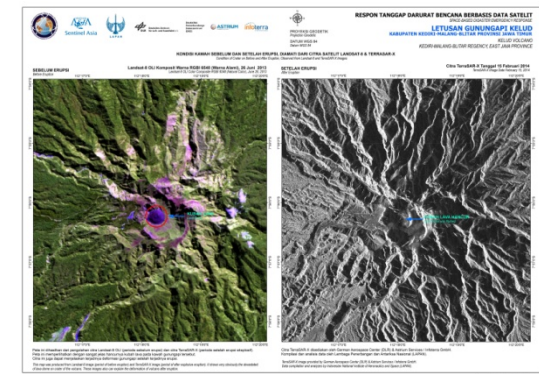


- **IMPROVEMENT OF INFRASTRUCTURE CAPACITIES**
  - Building Renovation
  - Tool and Equipment Improvement
- **CAPACITY BUILDING**
  - Project Manager Training
  - Join JAXA-AIT Miniproject
- **REGIONAL MEETING**

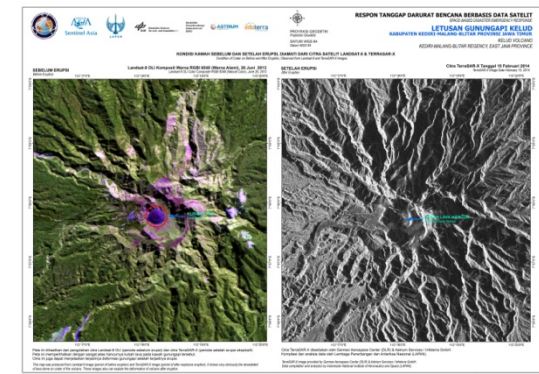
ASEAN WORKSHOP on "Development of Mechanisms for Acquisition and Utilization of Space-Based Information during Emergency Response".
- **DEVELOP THE MECHANISMS OF REGIONAL CHARTER ON SPACE AND MESO DISASTERS IN REGIONAL ASEAN**
- **DEVELOP THE DOCUMENTS OF RS APPLICATION FOR FOREST FIRE**
- **SPACE-BASED DISASTER EMERGENCY RESPONSE**



- Getting high resolution satellite images during emergencies
- Sharing knowledge and technology on RS application in disaster
- Strengthening the SOP for emergency response for LAPAN



- **Technical Advisory Meeting (TAM)**
- **Develop best practice of using space based information in pre-disaster phase to address hazard, risk and vulnerability mapping.**
- **Strengthening the emergency response using space- based information by addressing important concerns such as provision of high resolution images and SAR image.**
- **Regarding the mandate of sendai framework for DRR, propose to have some pilot project for RS application in disaster area from prevention, emergency response and recovery/rehabilitation stage.**



# Thank You

## Terima Kasih



### **LAPAN RSO UN-SPIDER**

Jl. Kalisari No.8, Pekayon, Pasar Rebo, Jakarta – INDONESIA

Telp. +62-21-8710065 / Facs. +62-21-8722733

E-mail: [timtanggapbencana@lapan.go.id](mailto:timtanggapbencana@lapan.go.id)